

# A46 4102: MASTERCLASS IN URBANISM, ARCHITECTURE + LANDSCAPE

*The Lively City: Behavioral Studies & Public Space Design: BERLIN*

Oliver Schulze, Visiting Professor of Urban Design, Washington University in St. Louis  
& Partner, Schulze+Grassov, Copenhagen, Denmark

John Hoal, Chair Urban Design Program, Washington University in St. Louis

**SPRING BREAK MARCH 8 - 14, 2015**

Liveability, lively cities, public life and other concepts describing inviting, vibrant and stimulating urban environments are frequently communicated in new visions for the future of cities today. This focus on 'urban life' is a direct reaction to the urban realities created in the 20th Century, where increases in our standards of living and the associated city building processes have created areas in which large and increasing numbers of people have become isolated from each other, socially & geographically. Despite our new awareness for the need to plan for a shared and intensified urban life in sustainable cities, we continue to have difficulties in understanding exactly what this 'urban life' is, how much of it we truly want and need, and how we can reconcile the often conflicting and simultaneous needs of people for privacy and social stimulation.

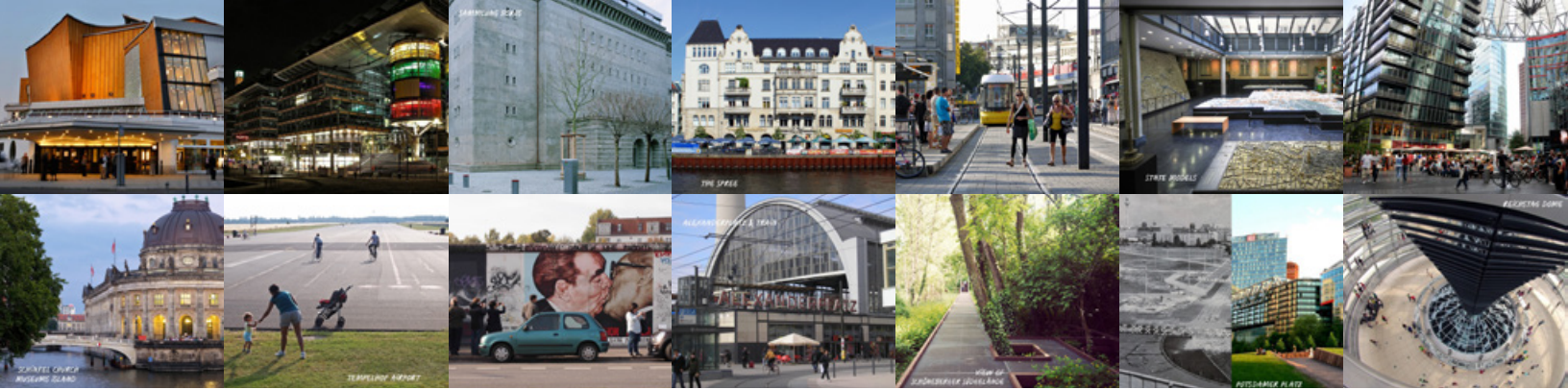
Over a five day period in **Berlin, Germany** students in architecture, art, urban design and landscape architecture will explore the "urban life" of the city and investigate the manner in which the City of Berlin has made the revitalization of their public spaces a central factor in its continued prominence as a major global city and one of the world's most sustainable cities.

During the stay the students will have the opportunity to visit a number of architectural, urbanism and landscape firms, and key contemporary buildings and landscapes. They will be introduced to the structure and working methods of the public space / public life methodology. The students will use time in Berlin to work with Oliver Schulze and analyze key public spaces utilizing the public space / public life methodology. An optional day trip to Potsdam will be offered at the end of the workshop.

Number of students: 20  
Workshop credits: 2







### Preliminary Schedule:

Saturday	M-07	Travel to Berlin ... earlier if possible
Sunday	M-08	Independent Exploration of Berlin maps and general information of key buildings & urban development will be provided
Monday	M-09	Berlin Introduction & Explore Old Berlin (Albert Speer + Big Stone and Concrete) ARUP Office visit City Council - Models Germania Olympiastadium Tempelhof Airport Park Bunker Tour by night
Tuesday	M-10	New Berlin: The Wall, Government Quarter, Memorials, Public Spaces, Baugemeinschaften Government Quarter Memorials New Public Spaces Survey Briefing Session with Oliver Schulze
Wednesday	M-11	Survey Day: Observing and recording public life in one chosen Berlin street
Thursday	M-12	Studio Day Studio briefing and assignment of tasks Studio Tutorials Production Time
Friday	M-13	Studio Day Production time Farewell Drinks with guests
Saturday	M-14	Personal Day & Optional Trip to Potsdam Sammlung Boros Potsdam Trip
Sunday	M-15	Return Travel to St. Louis

